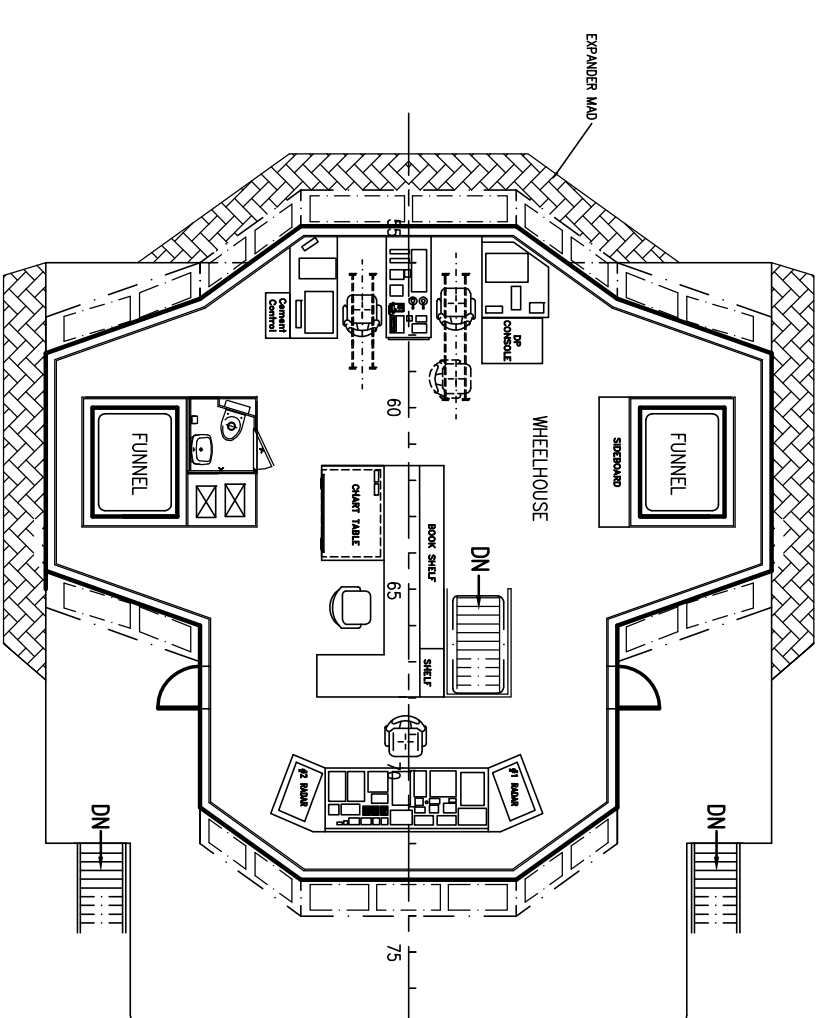
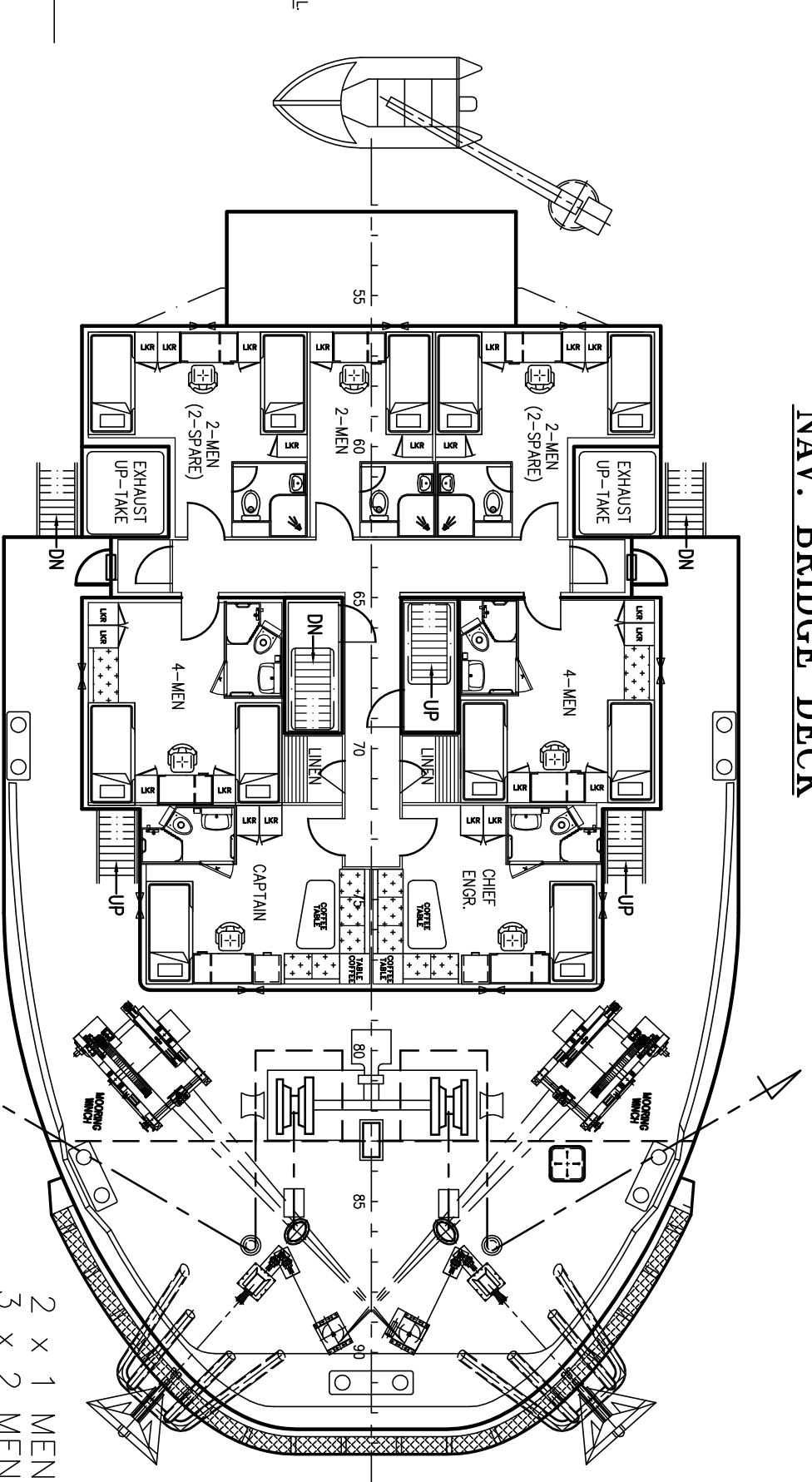


OUTBOARD PROFILE

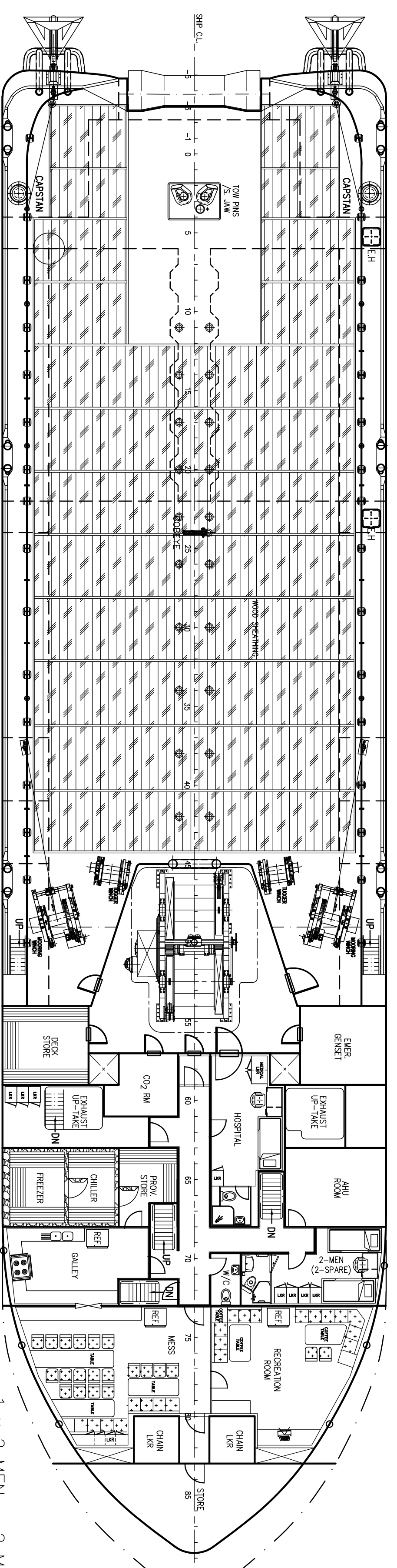


NAV. BRIDGE DECK



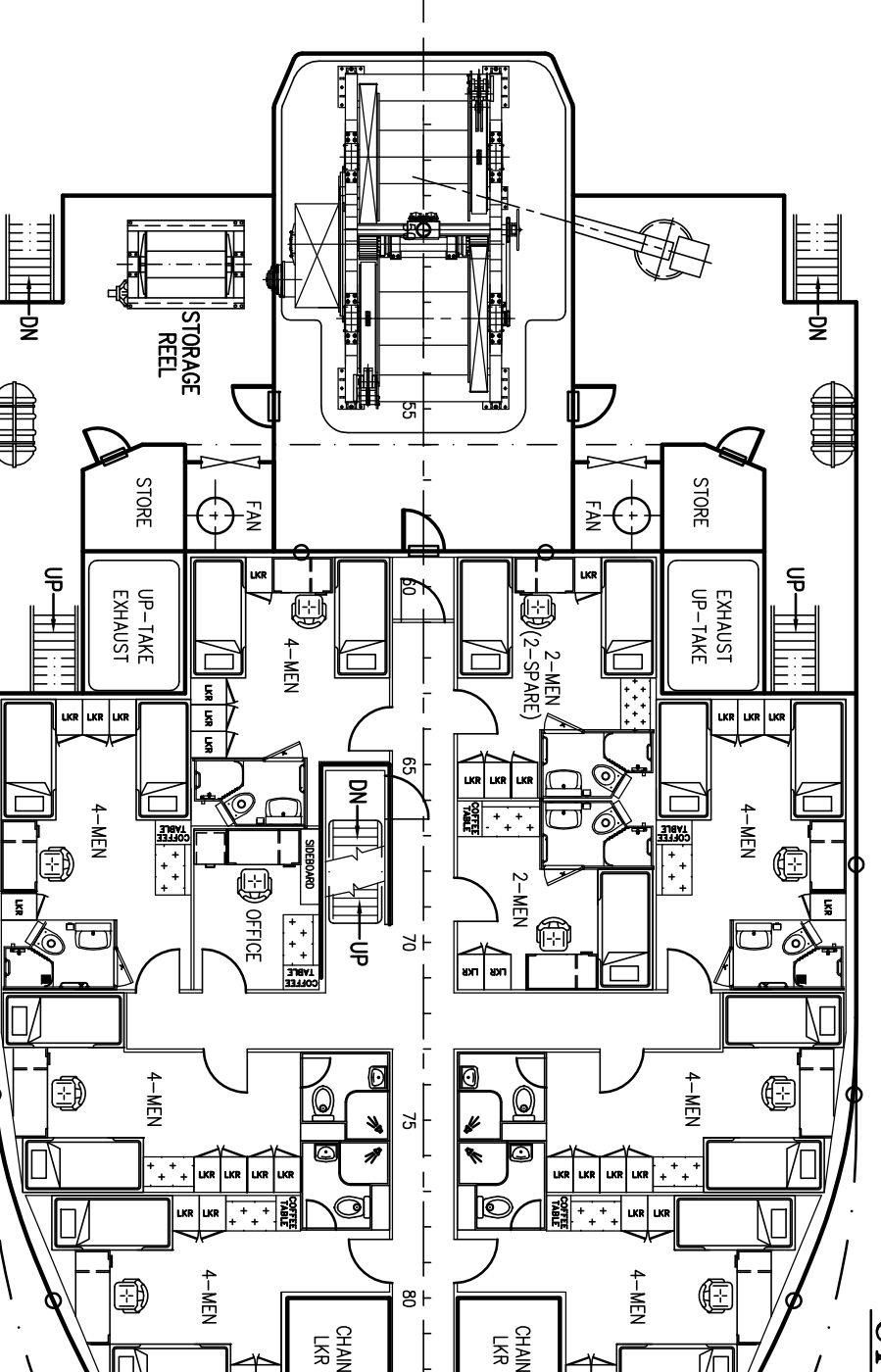
UPPER FORECASTLE DECK

2 x 1 MEN = 2 MEN
 3 x 2 MEN = 6 MEN
 2 x 4 MEN = 8 MEN
 TOTAL = 16 MEN



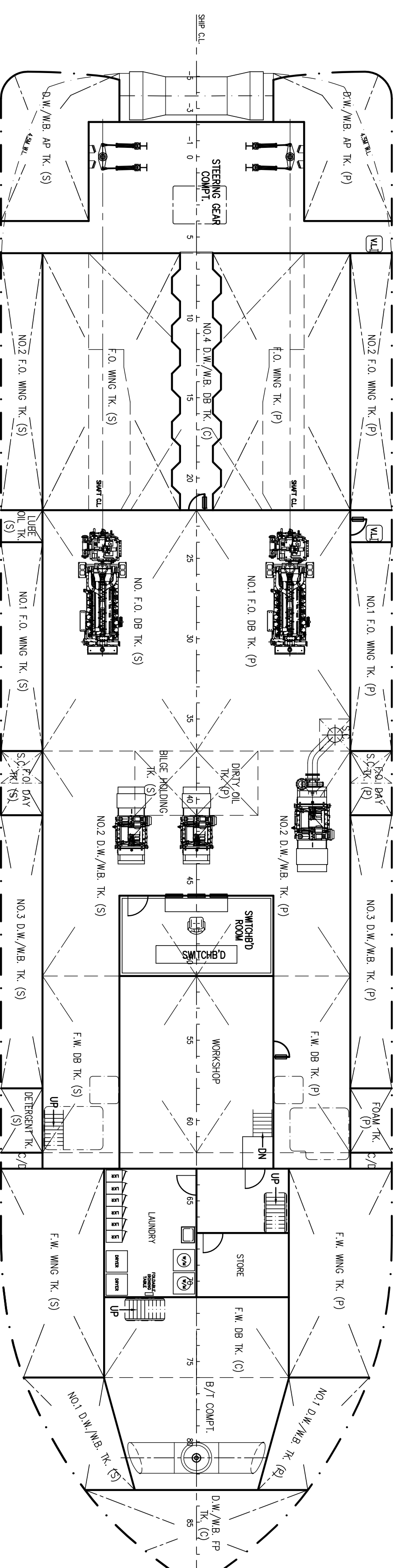
MAIN DECK PLAN

1 x 2 MEN = 2 MEN



FORECASTLE DECK

2 x 2 MEN = 4 MEN
 7 x 4 MEN = 28 MEN
 TOTAL = 32 MEN



BELOW MAIN DECK PLAN

PRINCIPAL DIMENSIONS

LENGTH OVERALL	58.70 M
LENGTH WATERLINE	56.57 M
LENGTH BETWEEN PERPENDICULARS	53.20 M
BREADTH MOULDED	14.60 M
DEPTH MOULDED	5.50 M
MAX. DRAFT MOULDED	4.75 M
ACCOMMODATION	50 MEN
FUEL OIL	590 M ³
FRESH WATER	300 M ³
DRILL WATER	460 M ³
CLEAR DECK AREA (DECK LOADING = 7 T/M ²)	300 M ²
TOTAL POWER	2 x 1962 KW
BOLLARD PULL	60 TONNS
SPEED	13.5 KNOTS

THIS DOCUMENT AND THE INFORMATION IT CONTAINS IS THE PROPERTY OF KHIAM CHUAN MARINE PTE LTD. IT IS NOT TO BE COPIED OR REPRODUCED IN ANY MANNER WITHOUT THE WRITTEN CONSENT OF KHIAM CHUAN MARINE PTE LTD.

PROJECT	58.7m ANCHOR HANDLING SUPPLY VESSEL
TITLE	GENERAL ARRANGEMENT
DESIGNER	KHIAM CHUAN MARINE PTE LTD
151, HILLVIEW TERRACE, SINGAPORE 669226	
TEL: 67333383	
EMAIL: khiamchuan@kcm.com.sg	
DATE	
BY	
CHECKED	
DRAWN	
SCALE	1:125
DRAWING NUMBER	KCM/0577 - G1
REVISION	
DATE	