

MV Excel

General

Type of vessel: Semi Jack-up offshore utility
Building year: 1992
Builder: Oerskov's Staalskivaerft,DK
Class / Classification: Germanischer Lloyd
Flag: St Kitts and Nevis
IMO Number: 8902046

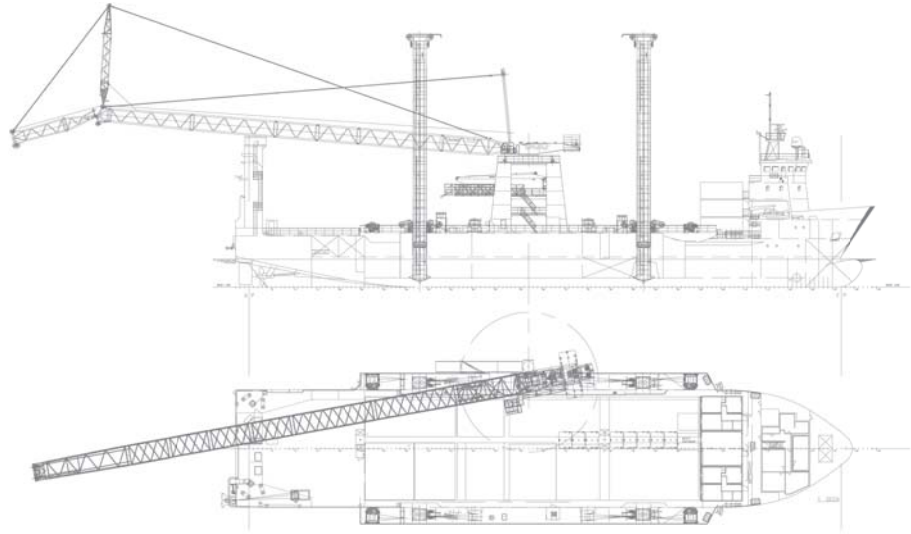
Technical Dimensions

Length overall: 91.76m
Breadth: 21.60m
Draft: 4.25m
Leg Length: 32m
Free deck space: 1020m² subject to deck layout
Speed: 8 knots
Jack-up system
Operating water depth: 4.5—24m depending on tide wave height and penetration.

Jack-leg System

No of legs: 4
Jacking system: Wire
Jacking speed: 0.7m/min
Spudcan footprint: 8.7m²

Semi jack-up offshore utility vessel



Main Crane

Type: Demag CC—2500
Main boom length: 60m + 12m Jib
Max crane capacity: 110t @ 20m outreach.
(Optional up to 450t subject to boom configuration)

Cargo Crane

Type: MH Hydralift
Main boom length: 11—19.5m
Max crane capacity: 27t

Accommodation

Total 45 berths
Crew: 16
Charterer's: 29

Main Engines and Generators

Main engines: 2 x 1200 KW MAK Diesels
Shaft generator: 2 x 750 KW Leroy Somer
Aux Generator: 1 x 425 kVA Scania
Power supply: 3 x 380v, 50 Hz

Tank Capacity

Fuel: 405m³
Fresh water: 39m³
Water Maker: RO
Sewage: 50m³
Sewage Treatmt plant: Wartsilla

OIS INTERNATIONAL LIMITED

VESSEL OWNERS AND OPERATORS FOR THE OIL & GAS INDUSTRY

UK Representative Office:
Woodlands,
Bradley Road,
Cowlinge, Newmarket
CB8 9HU UK

Phone: +44 1440 821672
Fax: +44 1440 821673
E-mail: enquiry@ois-intl.com
Web: www.ois-intl.com

ALL DETAILS ARE BELIEVED TO BE CORRECT BUT ARE WITHOUT GUARANTEE—SUBJECT TO ALTERATION AND IMPROVEMENT